



新北高中
New Taipei Municipal
New Taipei Senior High School

Goal:

A modern international school
prioritizing technology, aesthetics, humanities, and bilingualism.

Strategies:

1

Establish a learning organization with smart technology and willingness to share.

2

Create a new century school with high quality, friendliness, and distinctive characteristics.

3

Construct a sustainable green campus with energy saving, high efficiency, and a pleasant atmosphere.

New Taipei Senior High School (NTSH) was established in 1994 and began enrolling students in 1997. It is located in Sanchong District, New Taipei City, closely situated near Luzhou District, New Taipei City and Shilin District, Taipei City. The school covers an area of 7.6 hectares and has 17 classes for each grade, including 15 regular classes, 1 music class, and 1 sports class, with 51 classes and approximately 1800 students in total.

The school boasts a beautiful environment with unique Eastern and Western style courtyards. Abundant flowers, plants, and trees create a rich ecological atmosphere, making visitors linger. The majestic school buildings feature spacious classrooms with front and rear corridors, providing an ample activity space. It is equipped with an indoor heated swimming pool, a multi-functional sports complex, an astronomy hall, an observatory, an international conference hall, a digitalized library, a concert hall, as well as specialized classrooms and laboratories for various subjects. The teaching equipment and curriculum design are aligned with the 108 curriculum guidelines. The teachers are highly qualified, and their teaching performance is outstanding, providing students with the best learning environment.

The school adheres to a cultural, forward-thinking, macroscopical, and modern mind with the goal of cultivating students with knowledge, emotions, skills, and whole-person development. Adhering to the educational philosophy of respect, gratitude, confidence, and ideal, the school designs and promotes various courses, organizing diversified activities to train students to become global citizens with critical thinking, creativity, and developmental capabilities. Parents, teachers, and students work hand-in-hand to create five distinguishing school characteristics: internationalization, intelligence, diversification, art, and localization, creating a modern, internationally-oriented school rich in technology, beauty, humanities, and bilingualism.

Motto

Respect

Being worthy of respect is our guiding principle.

Gratitude

Maintaining a constant sense of gratitude is our enduring commitment.

Confidence

Holding steadfast to confidence is the cornerstone of our efforts.

Aspiration

Pursuing our ideals is our goal.

Traffic information



MRT:

From St. Ignatius High School MRT Station, it takes approximately 6-10 minutes to arrive at New Taipei High School by riding a U-bike or taking a bus. There is a U-bike station at the school entrance.



Bus:

■ Fenziwei Station

39, 39 (Night Bus), 62, 226, 539, 811, 815, 816, 927, 927 (via Taipei Port) , 928, O13, R9

■ New Taipei Senior High School Station

811, 815, 816, 927, 928, 927 (via Taipei Port) , R9, O13, O18, O18(via Fulong Rd.), O19, O19 (sub line), Leap Frogging Bus (Luzhou-Shilin)



新北高中

New Taipei Municipal
New Taipei Senior High School

School Vision:

To nurture students into global citizens.

Key Competencies:

Critical thinking, creativity, and adaptability.

Core Curriculum Principles:

Self-initiative, mutual benefit, and common good.

241301新北市三重區三信路1號
Sanchong District, No. 1 Sanxin Road
電話(02)2857-7326 傳真(02)2857-6904



Gorgeous

New Taipei Senior High School creates a sustainable space that is energy-efficient, pleasant, and of high quality. In this refined atmosphere full of humanistic vibes, we build an accessible and friendly campus environment for barrier-free learning.



High-tech

We guide students to a new era of technological education. Modernized laboratories, computer rooms, dware equipment like tablets and touch-screens enable students to unlock limitless potentials.



Educational

We hold various literary and artistic exhibitions and performances regularly both inside and outside the school, encouraging students to explore and unleash their talents, ensuring that each student can find the best stage to express themselves.



Amazing

Our students have excelled in extracurricular competitions in such fields as science, sports, and music, winning numerous awards. At NTSH, it's quite possible for every student to realize their dreams.



Youthful

Our rich and diverse range of clubs provide students with opportunities to fully utilize their interests and talents, fostering teamwork, leadership, and expressive skills, displaying their talents, broadening their horizons, and enriching their lives.



Development Framework of International Education



International Sister School

Guahm High School, Korea
Himeji High School, Japan
Yashio High School
Taipei Japanese School



Educational Travel

Japan Educational Travel
Korea Educational Travel
Short-term study tour in the UK
Short-term study tour in Australia
Queensland STEAM Course Exchange



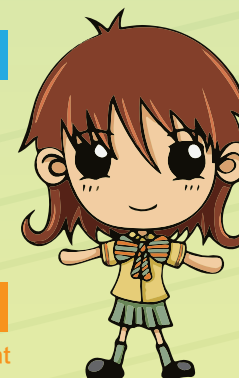
Language Proficiency Tests

Foreign languages courses
GEPT tests
TOEIC tests
Japanese proficiency tests



Curriculum and Teaching

Global Citizenship Development
Model United Nations
Amnesty International's Writing for Rights Campaign
World Dream One Kanji Character Contest
Hands Together Project
Rotary Youth Exchange Program
Debate Competition on Sun Tzu Art of War



Educational

We focus particularly on innovative teaching, professional knowledge acquisition, active inquiry, practical application, and achieving results, as well as participating in competitions. Welcome to our learning community and explore the road to innovation together.



Unique

We help students to enhance cohesion and achieve self-fulfillment by providing diverse activities, life education, career guidance, adaptive development, life blueprints, and exploring experiences.

